

JUMBERCA RETURNS



Electronic Jacquard double jersey machine in 3 technique ways



ED60
ED76

power of innovation by



CANMARTEX

Double jersey machines with electronic jacquard selection available in two versions, both with 2 feeders/inch:

- **ED60 model for FASHION FABRICS and**
- **ED76 model for TECHNICAL and MATTRESS FABRICS.**

These models of machines can knit all possible structures of double jersey fabrics, electronic jacquard with 3 technique ways.

Standard features:

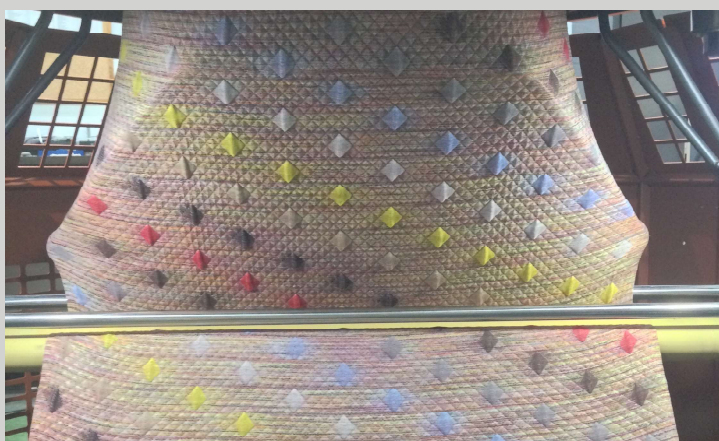
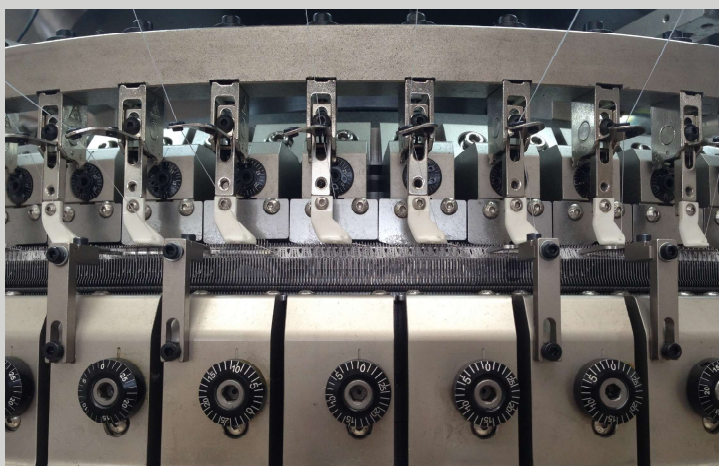
- Solid frame with system of cylinder bearing submerged in an oil bath.
- Individual stitch length adjustment.
- Cylinder and needles supplied by GB.
- Supplied with 3 technical ways.
- Supplied with 2 needle tracks in dial with exchange cam to Knit – tuck – miss.
- Spacer fabric kit.
- In-lay device.
- Latch opener device.
- Ceramic yarn carries.
- Positive feeders supplied by Memminger.
- Electronic feeders.
- Elastomeric plating equipment with MER.
- Electronic fabric take-down shaft.
- 500 mm fabric rolls.
- Rotating cutting device (only ED76).
- Martex aluminum tube side creel.
- Pulsonic 5.2 oiler.
- Control Navigator Memminger.
- Memminger software to assign jacquard functions.
- Frequency controlled drive (AC) 5,5 Kw.

Optional features:

- Industrial frame for 800 and 1000 mm fabric rolls.
- Open width device (only ED60)
- Electronic needle detector.

Under customer requirements, our I+D+i department will work to get the target exclusively to each demand.

Model	ED60	ED76
Diameter inch	26" - 34"	26" - 42"
Gauge	5 - 32	18 - 22
Number of feeders	1.6 - 2	2



subject to technical changes illustrations may show accessories that are not included in the standard version



www.canmartex.com

Polígono Industrial El Cros · Carrer Can Diners, 1-11
08310 Argentona (Barcelona) · Tel. (34) 937 594 544
canmartex@canmartex.com